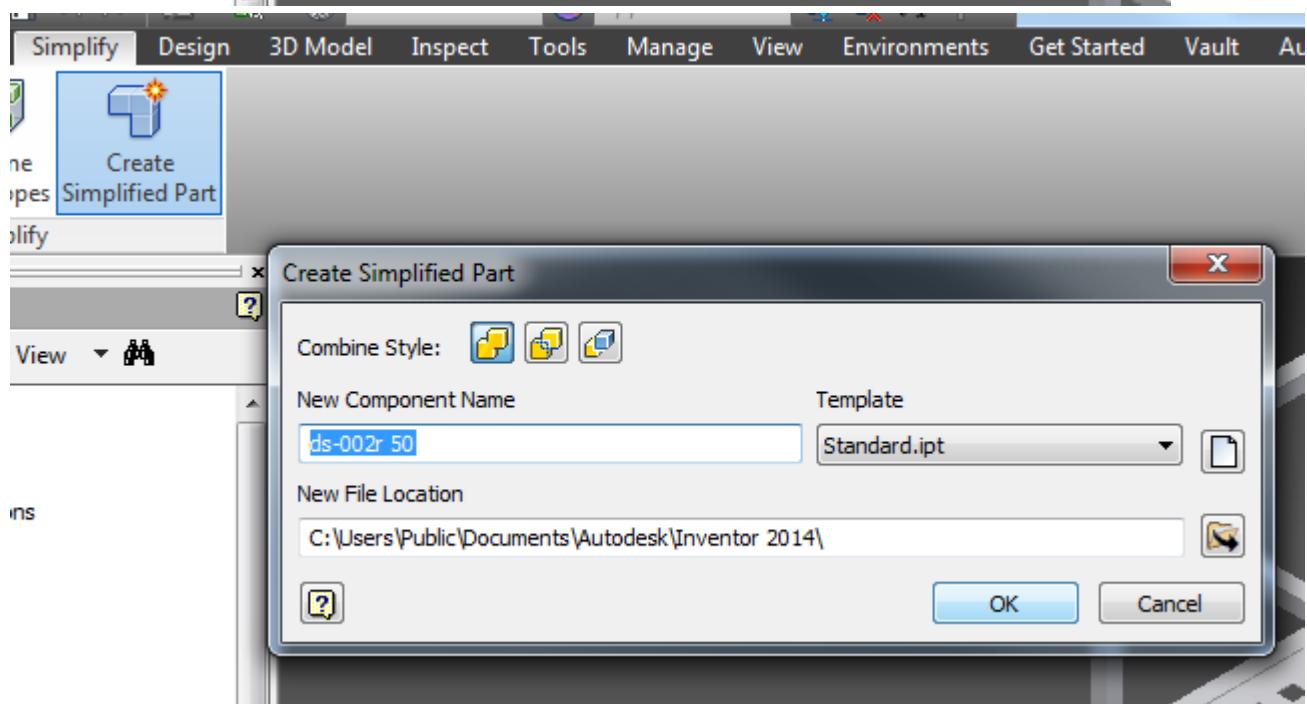
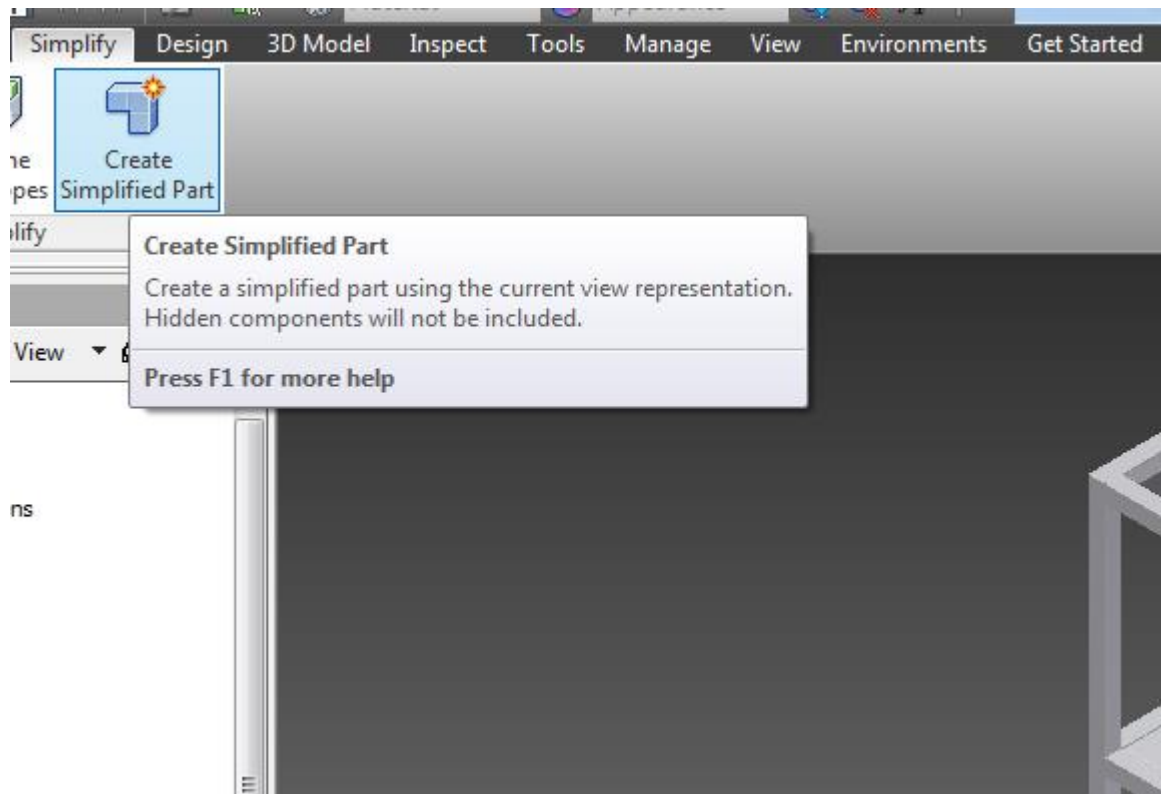


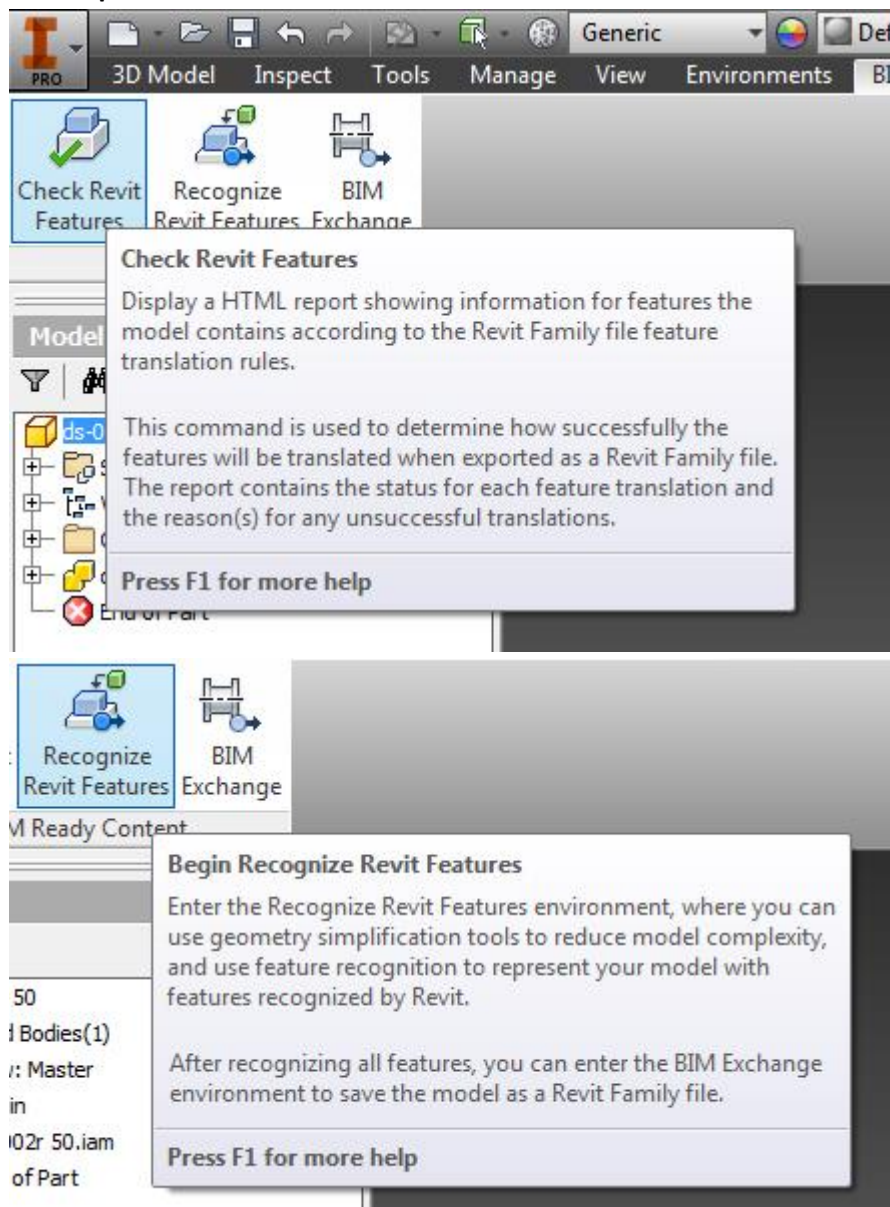


Revit Interoperability with Inventor

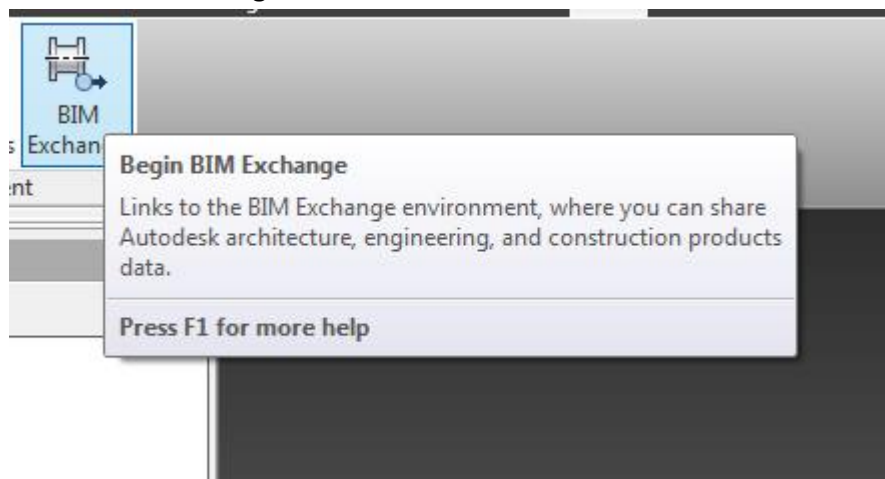
Here's a sample workflow of exporting a file to Revit and importing Revit files:



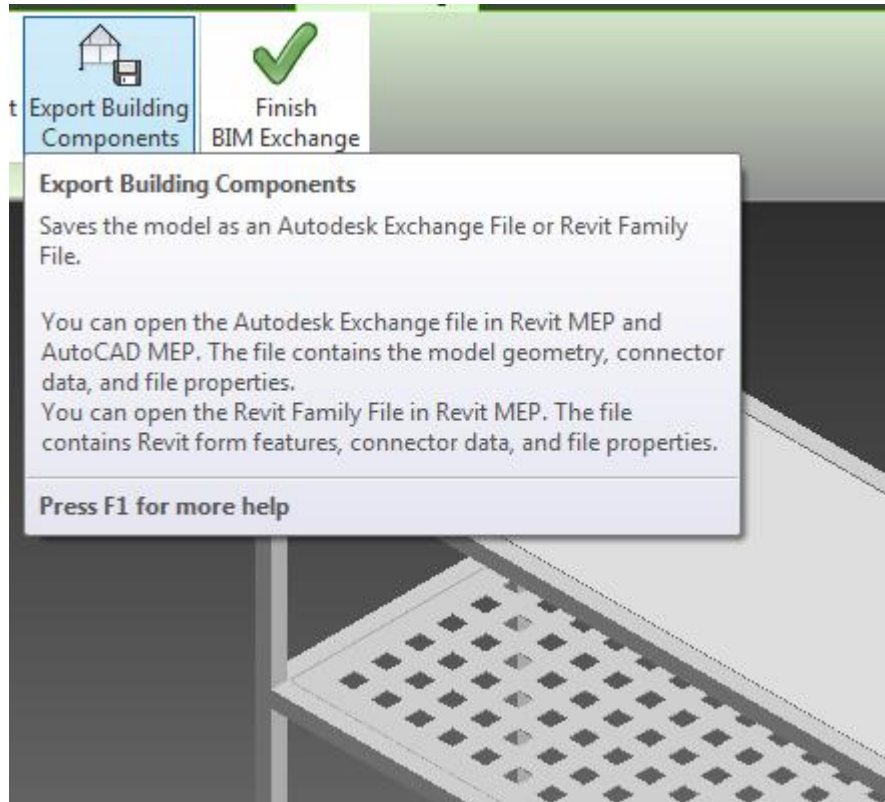
Revit Options



Click on BIM Exchange

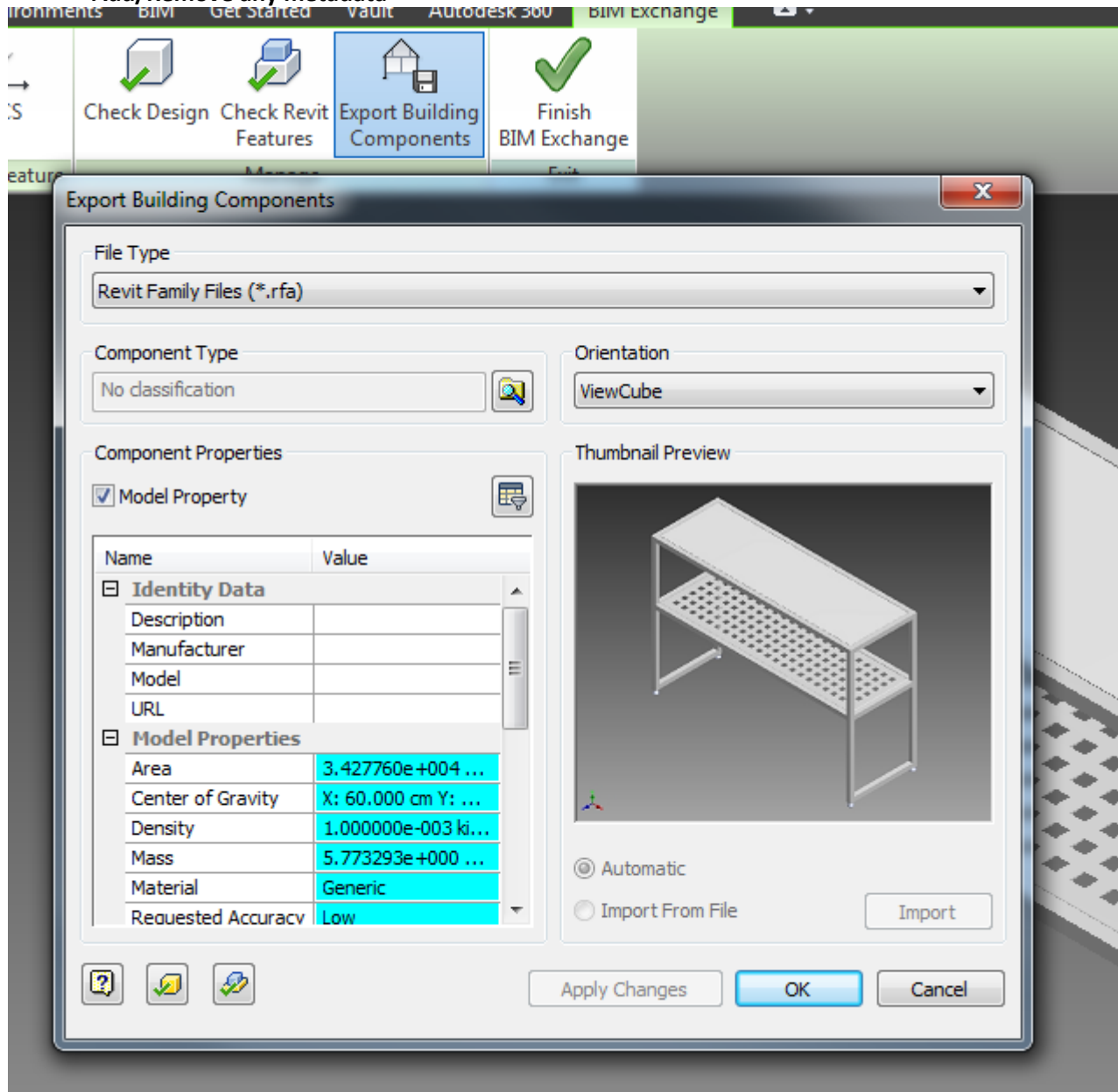


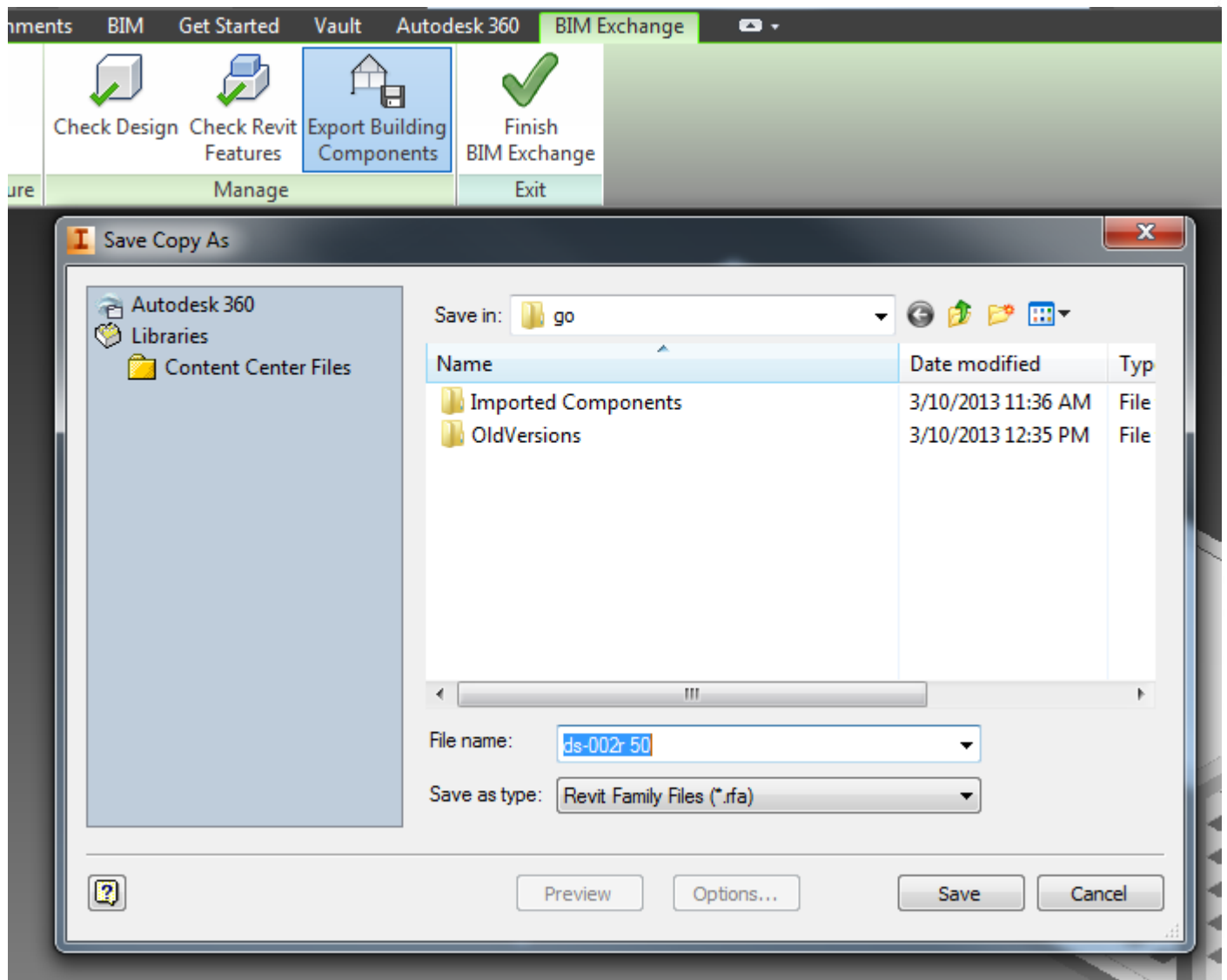
Export File to Revit



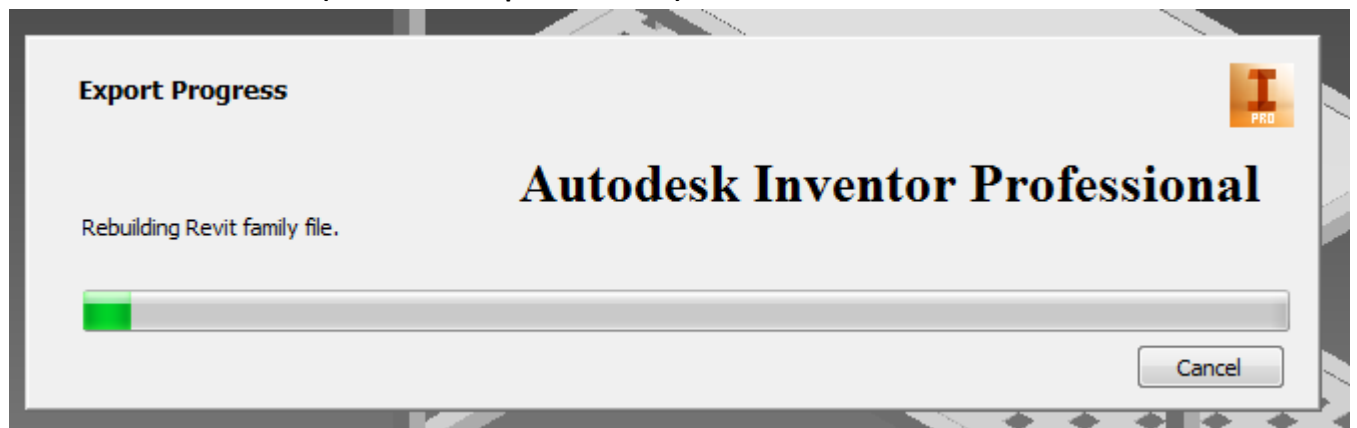
Export The File to Revit

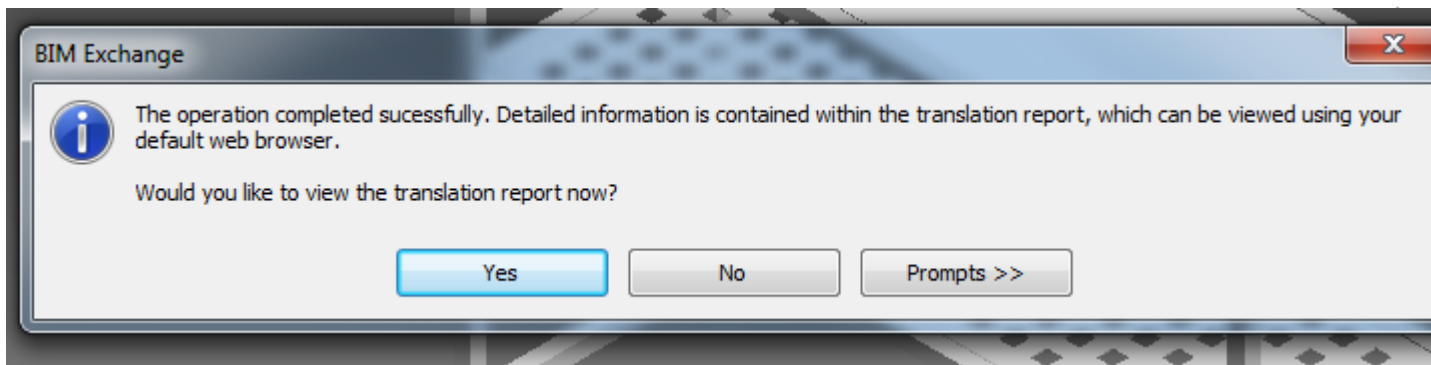
- Add/Remove any metadata



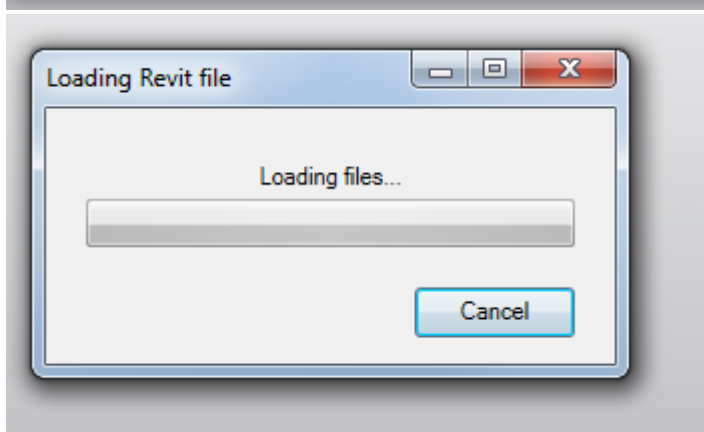
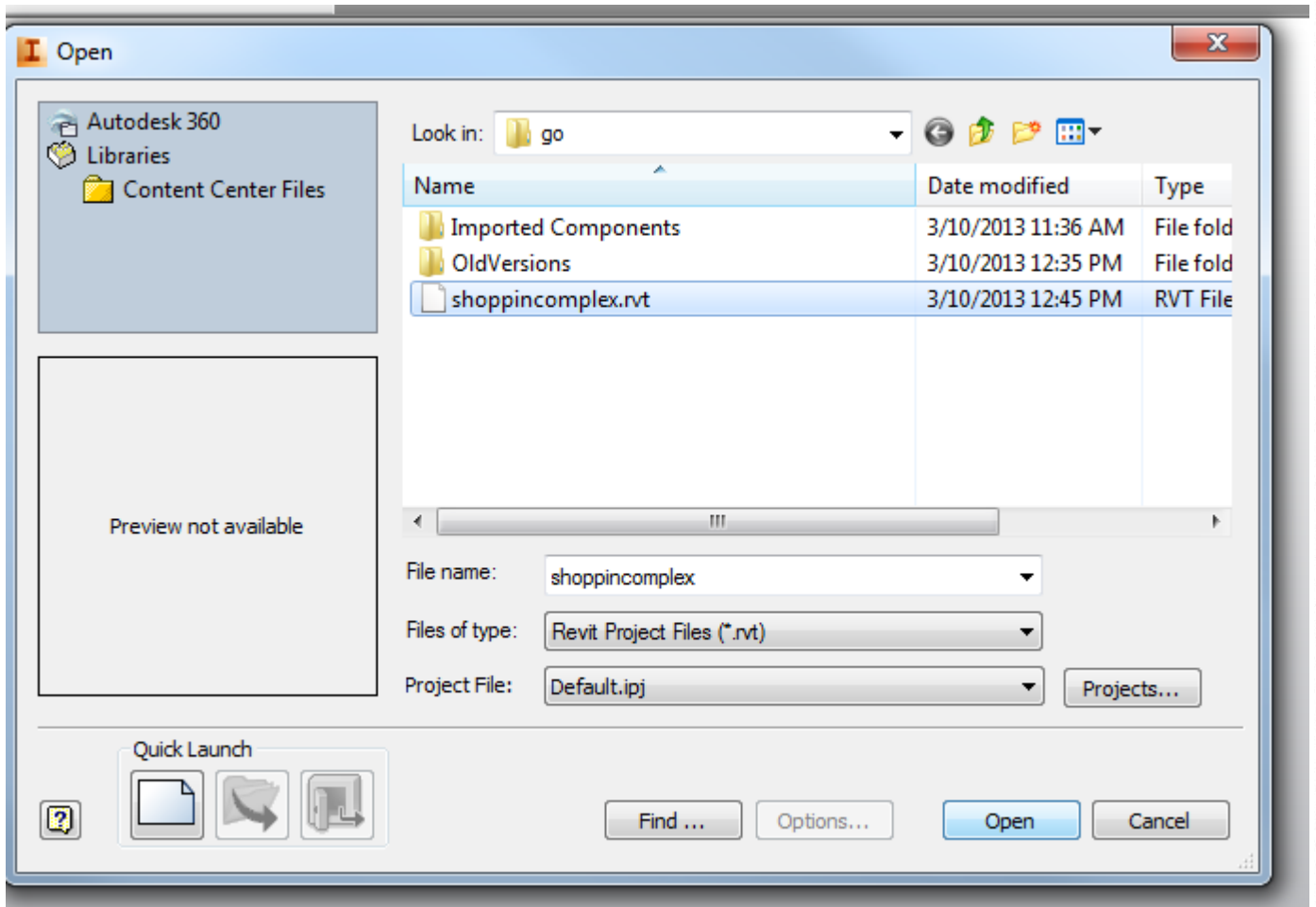


Revit Conversion Process (Translation Report Attached)

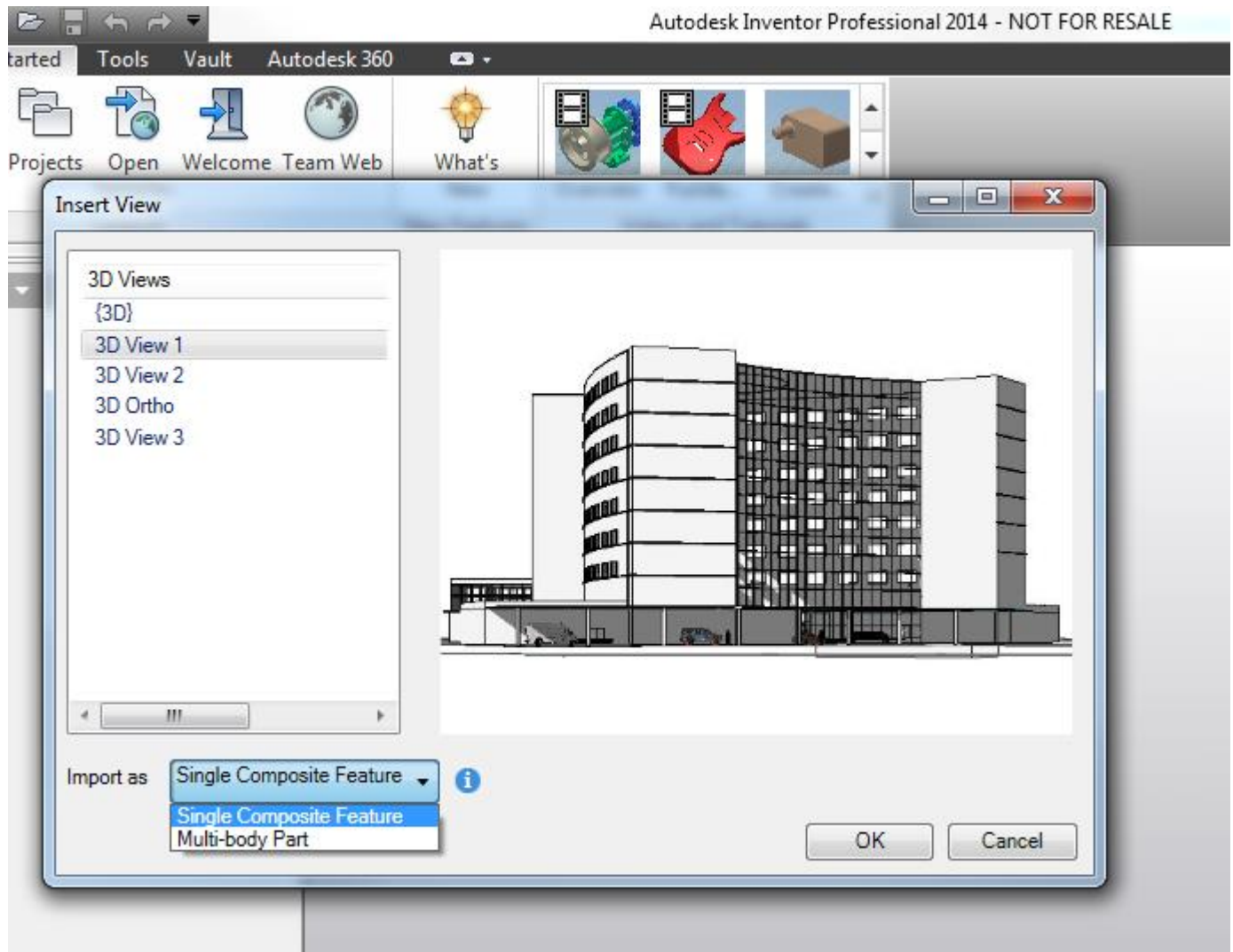




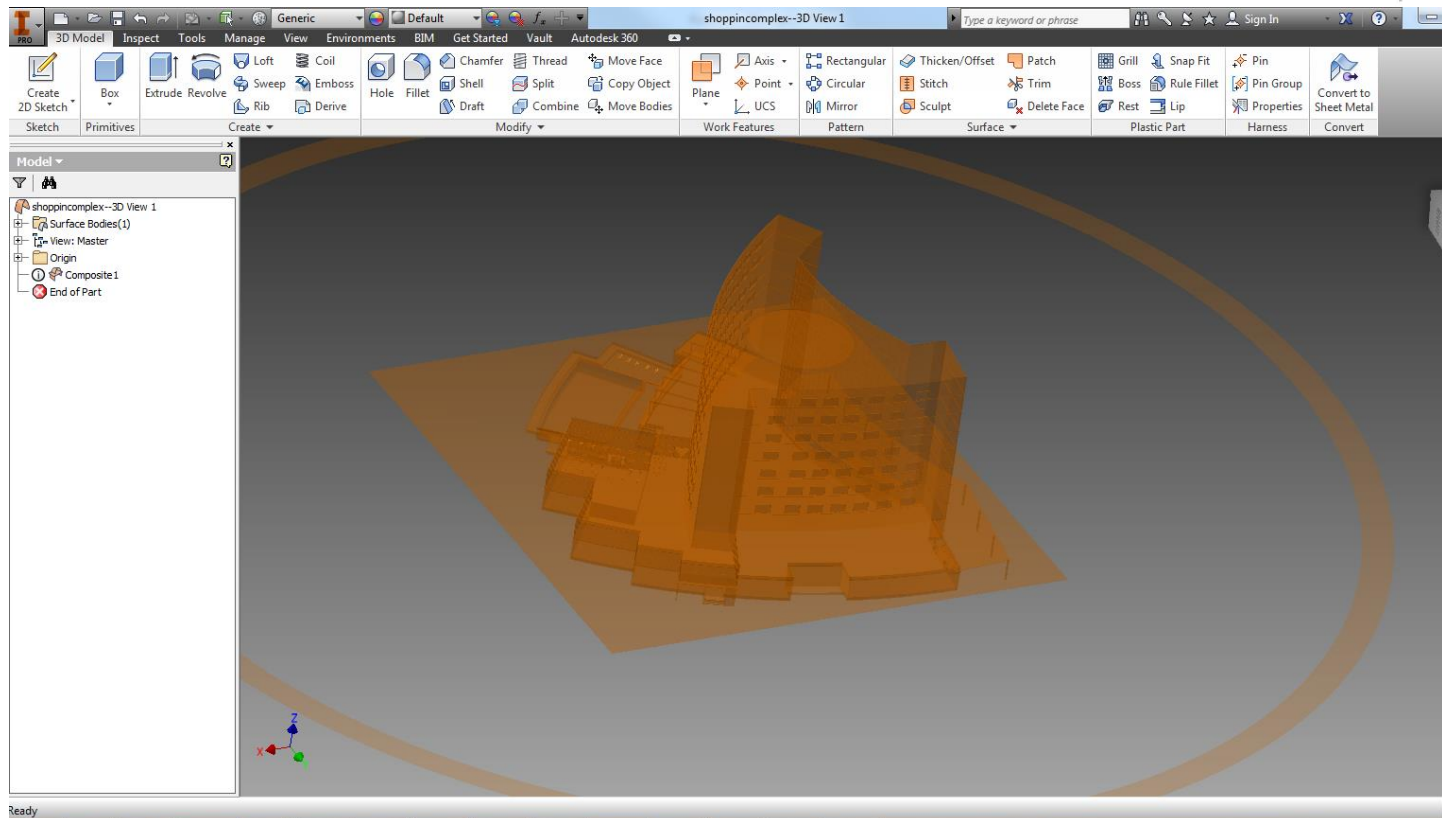
Opening a Revit File



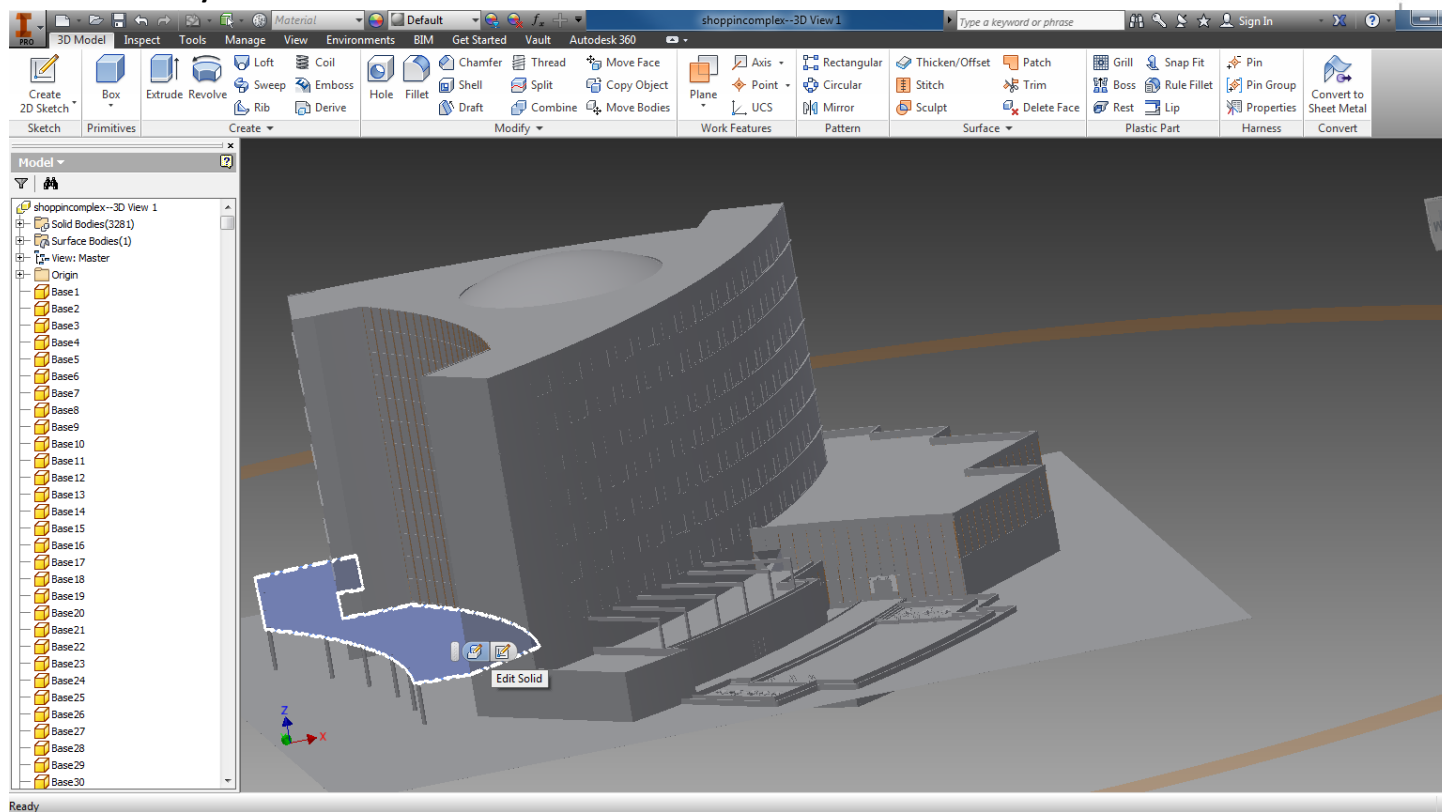
Select Options



Single Composite Feature



Solid Multi-Body



Cross Section (Full & Zoomed)

